

Hi everyone  
Again, please sit together in your  
groups

Go ahead and log in  
(you can boot on your normal Win7 session)

While waiting for everyone, you can install the two  
tools available in the blackboard:

- ExtendSim9Demo
- CaliachVisionDemo

Each group will need to submit **one** brief (max 2 pages\*) written report

**\*Screenshots and output from programs can exceed 2 pages\***

The deadline is **29 March**  
(deadline of lab 1: **15 March**)

(both dropboxes are available on the  
blackboard)

**Scenario:** You should create a story/character that guides how you input data into your system

**Screenshot:** Any task that asks you to do something, take a screenshot (Print Screen) to show you completed it

# One representative from your group should submit the group report on Blackboard






- 1) Enterprise Resource Planning  
using Caliach Vision
- 2) Simulation using ExtendSim
- 3) Statistical Analysis using  
SPSS

A blurred background image showing a business meeting. Two people are seated at a table, looking at a laptop screen. The screen displays a bar chart and a pie chart. One person is pointing at the screen with a pen. The overall scene is in a professional office setting.

# What is Enterprise Resource Planning (ERP)?



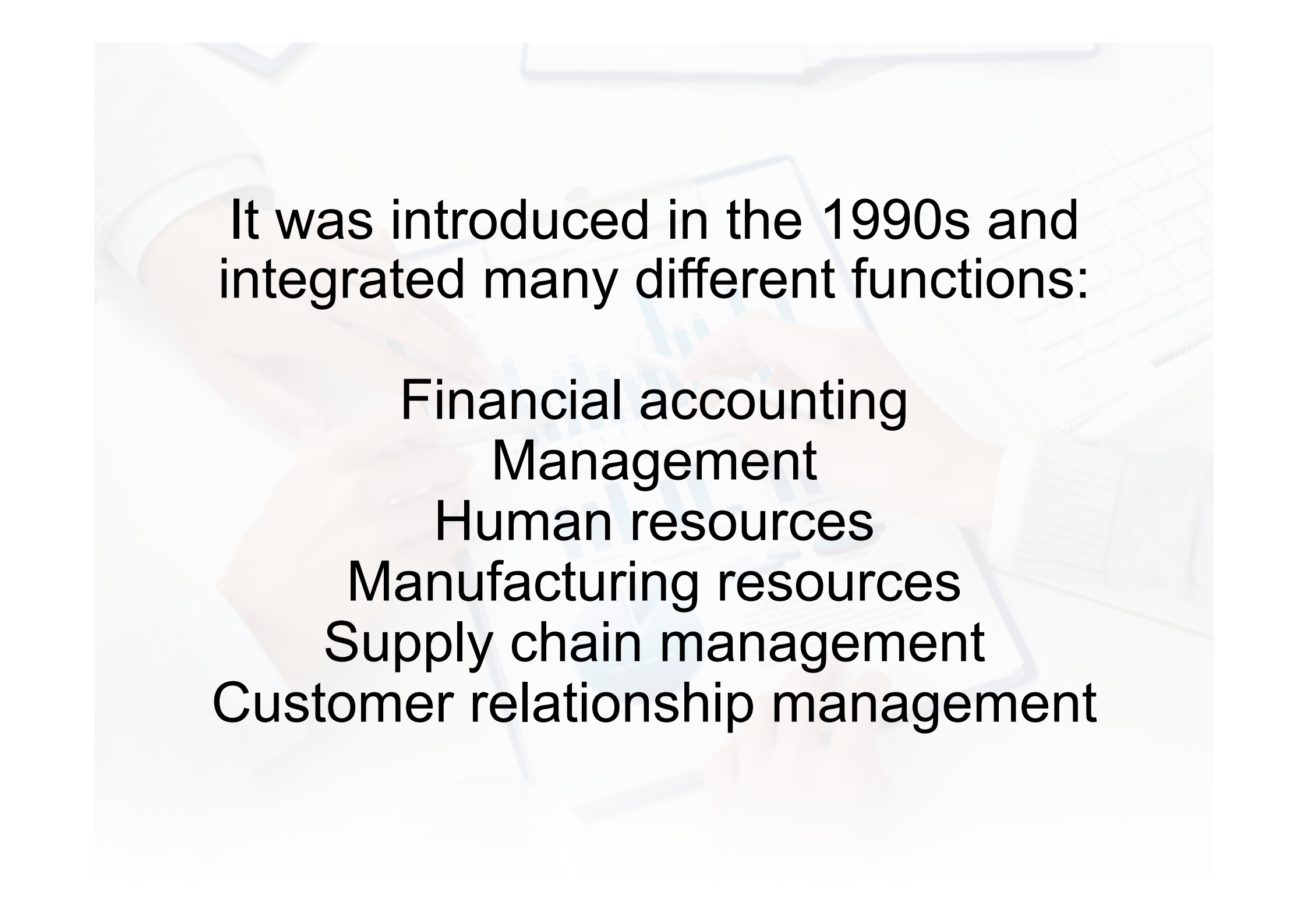
ERP is a business management software suite that is used to collect, store, manage and interpret business data

e.g.

Product planning


Manufacturing

Inventory management

The background of the slide features a faint, light-colored image of two hands holding a tablet. On the tablet's screen, a blue bar chart is visible, showing several vertical bars of varying heights. The overall image is semi-transparent, allowing the text to be clearly legible.

It was introduced in the 1990s and integrated many different functions:

Financial accounting  
Management  
Human resources  
Manufacturing resources  
Supply chain management  
Customer relationship management



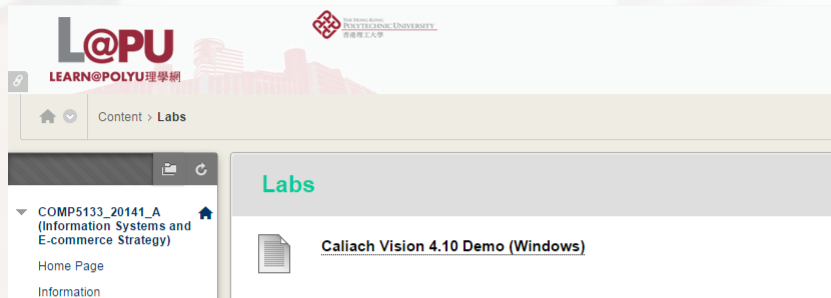
ERP software like Caliach Vision  
consists of a several major  
components:

Relational database  
Workflow management  
Reporting system  
Business intelligence  
Search engine

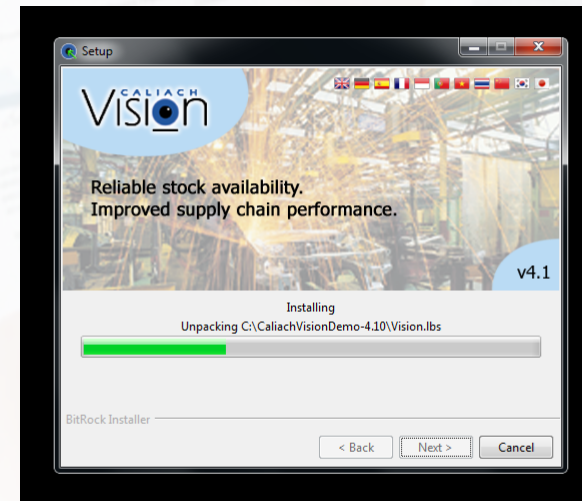
A high-angle, slightly blurred photograph of a business meeting. Two people are seated at a white table. One person's hand is pointing at a bar chart on a clipboard, while the other's hand holds a pen over the same chart. The clipboard also features a pie chart and some text. A laptop keyboard is visible on the right side of the frame. The overall scene suggests a collaborative work environment.

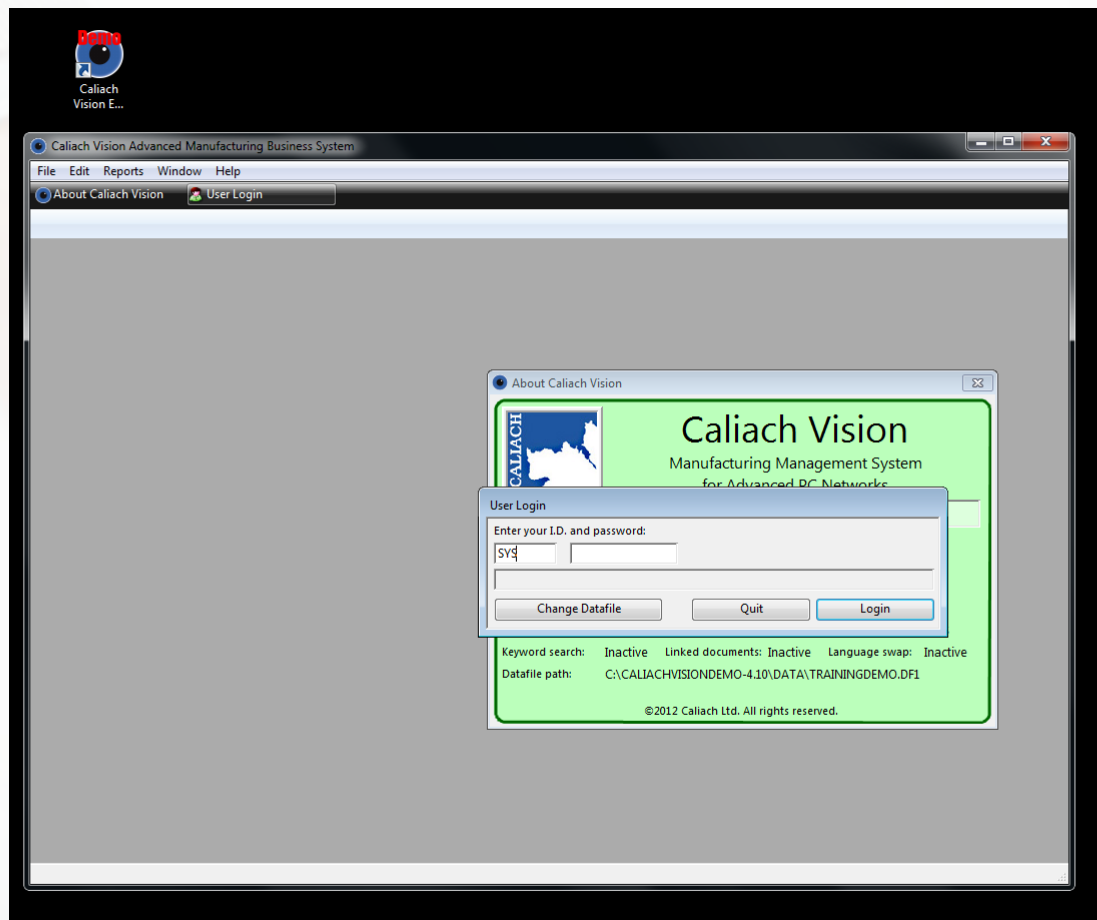
# Using Caliach Vision





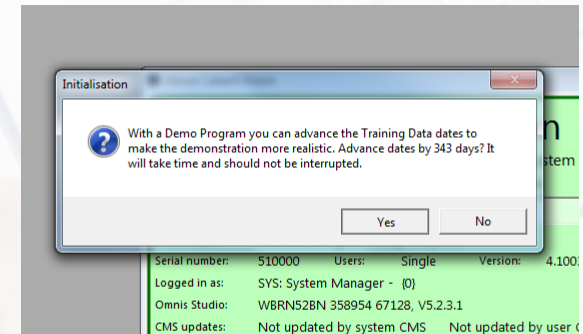
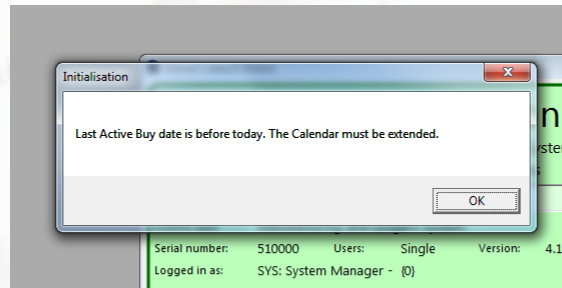
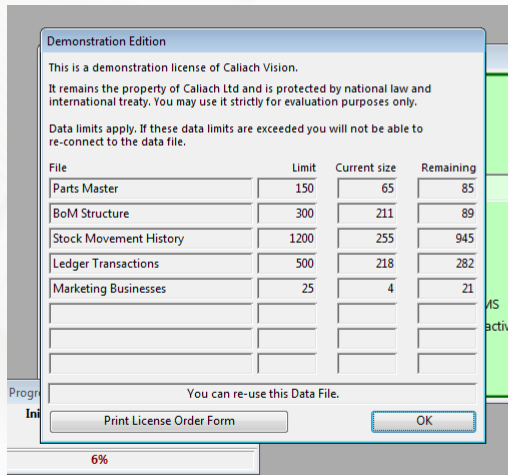
# Download and install





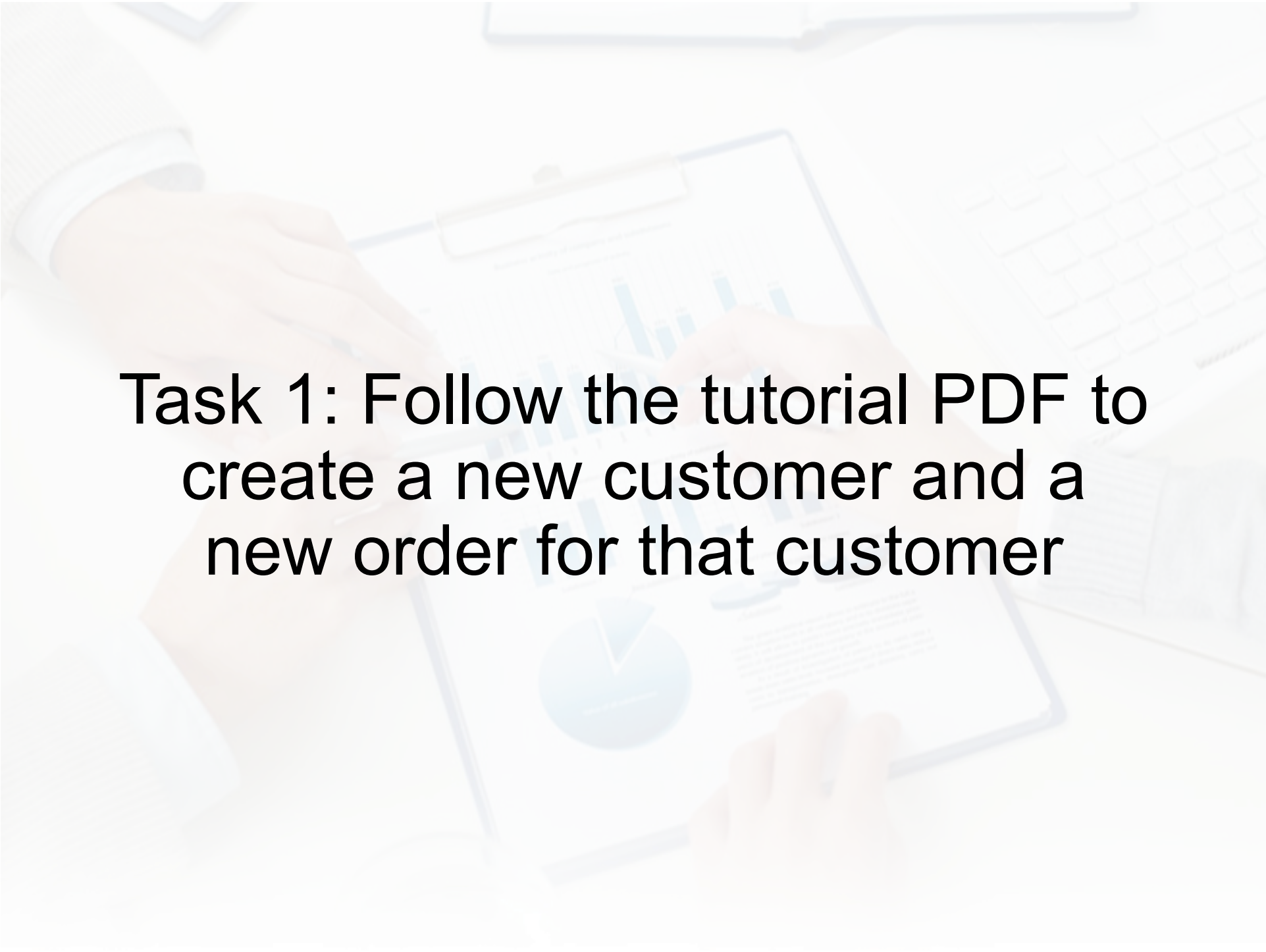
Log in with SYS (no password)



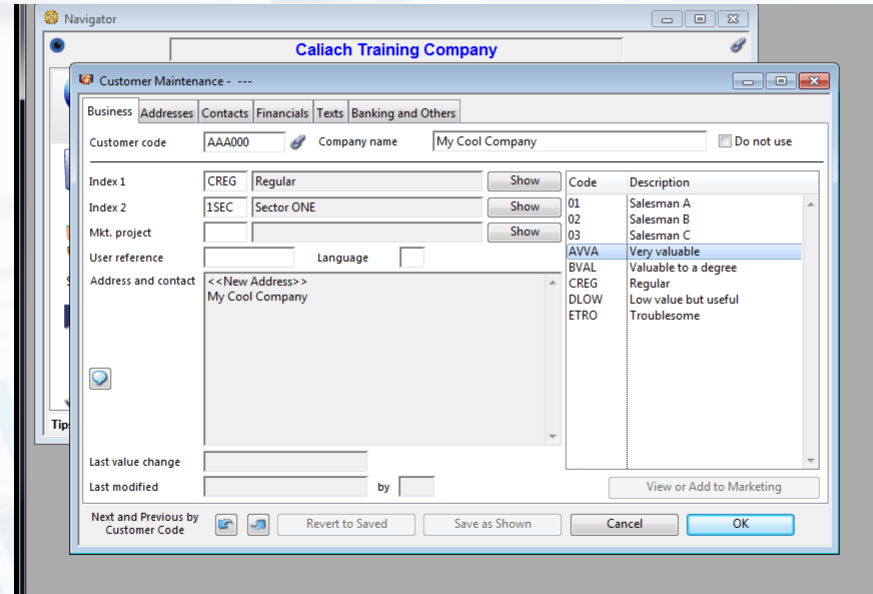
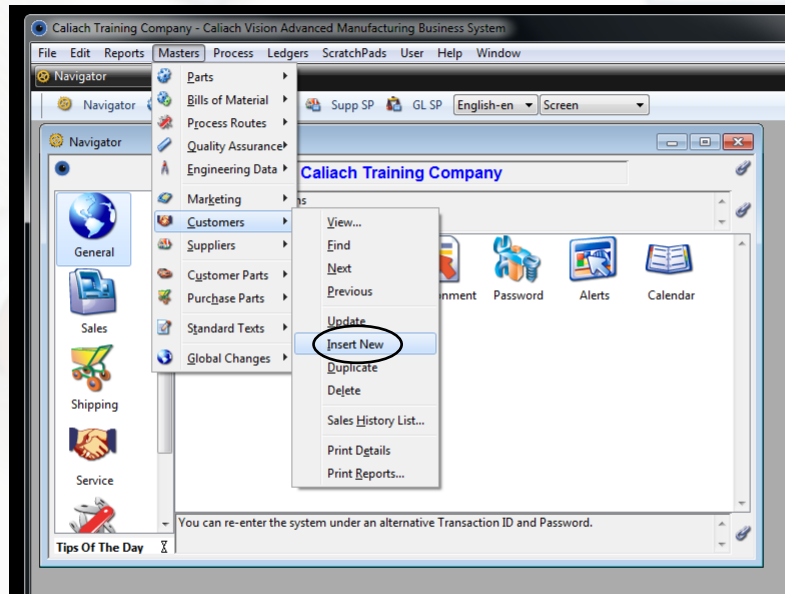


# Click OK/Yes/Close

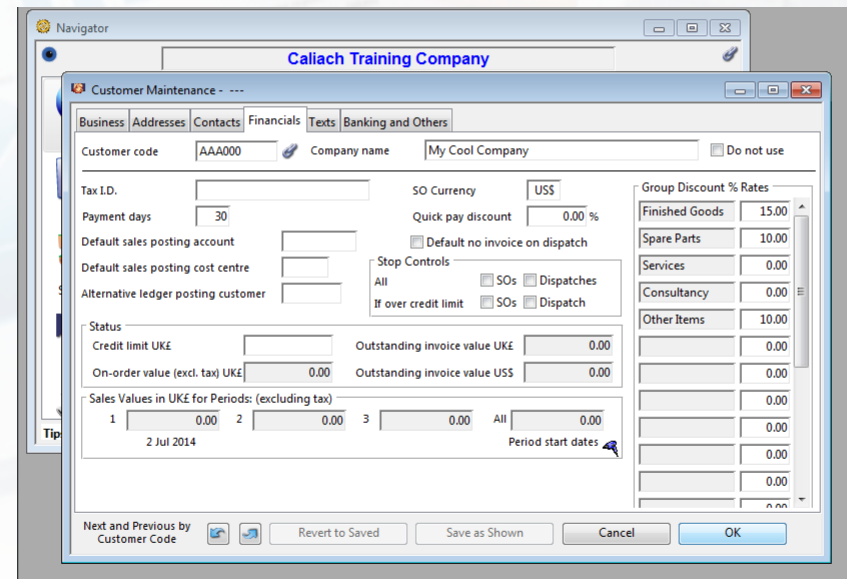
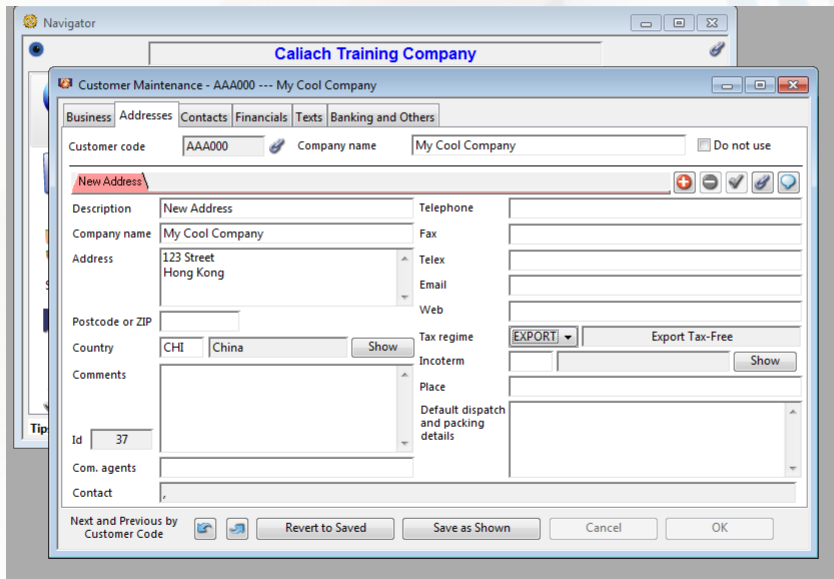


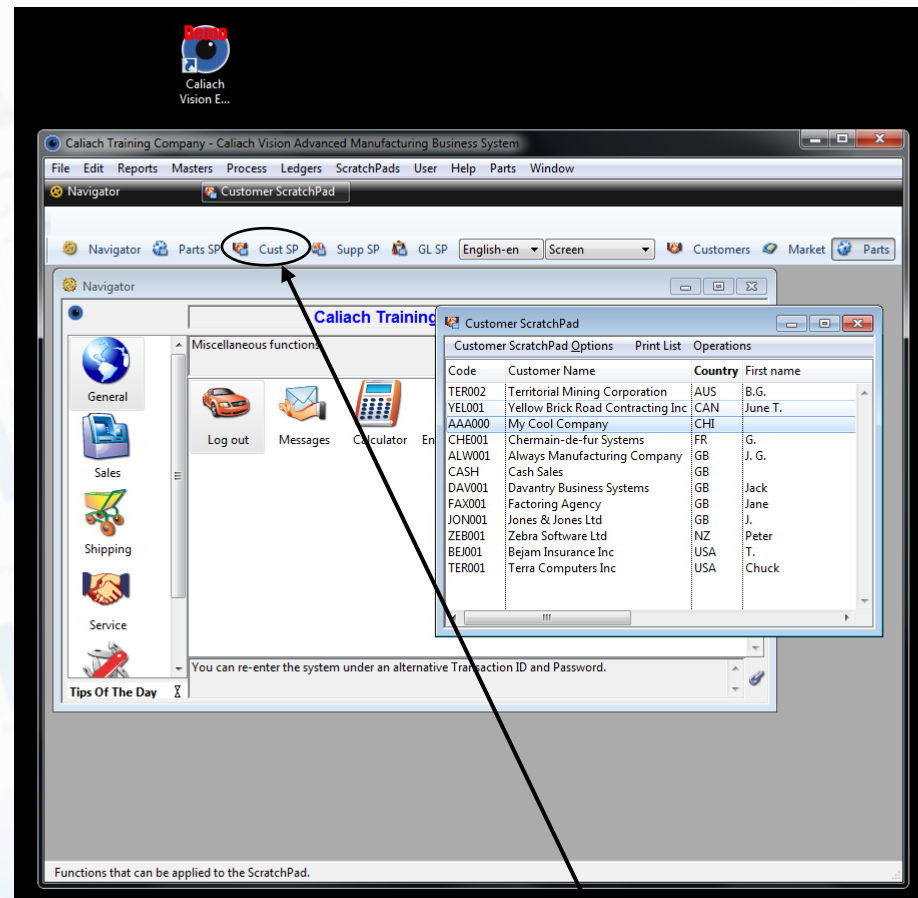


**Task 1: Follow the tutorial PDF to  
create a new customer and a  
new order for that customer**

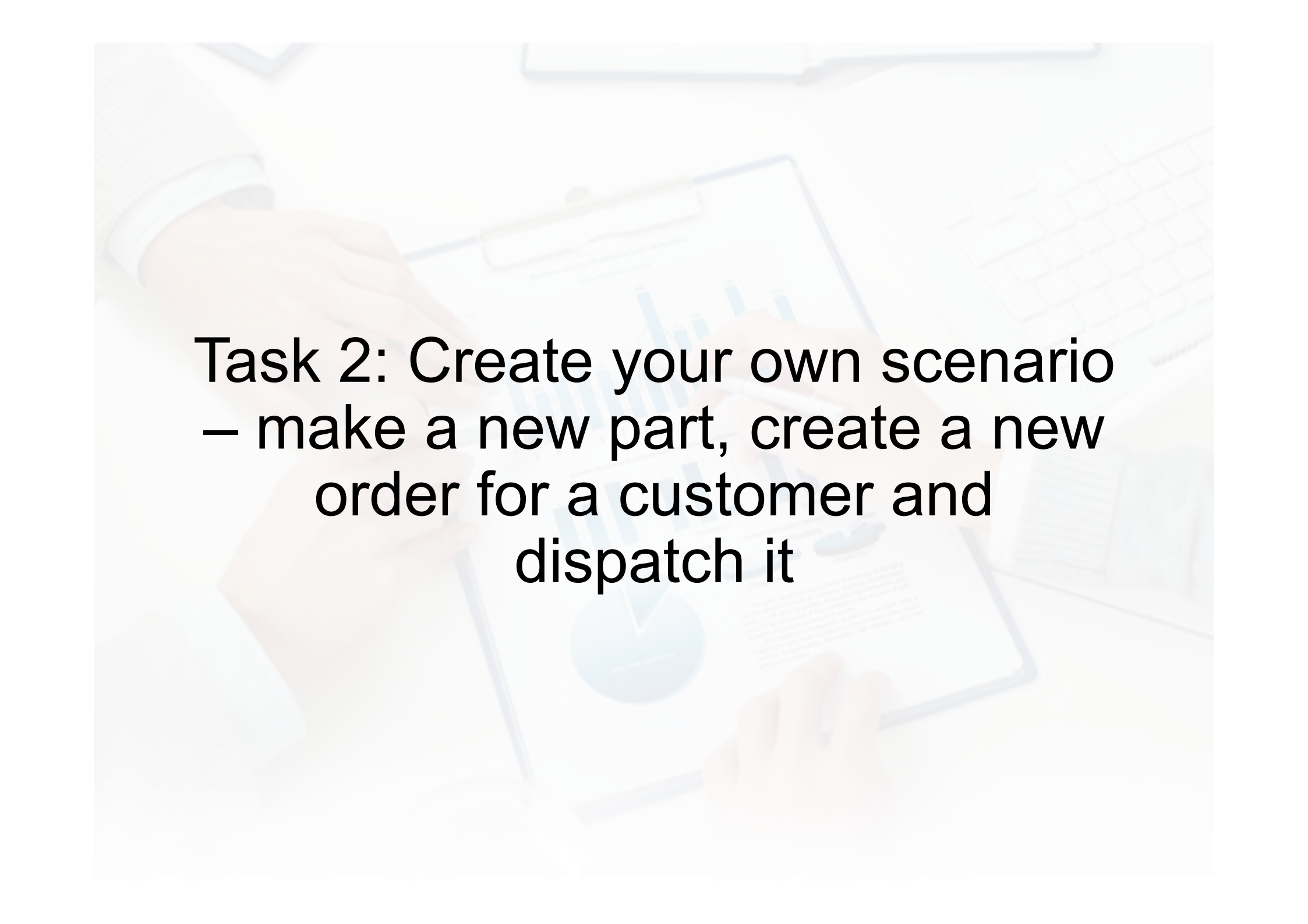


# Enter a new customer



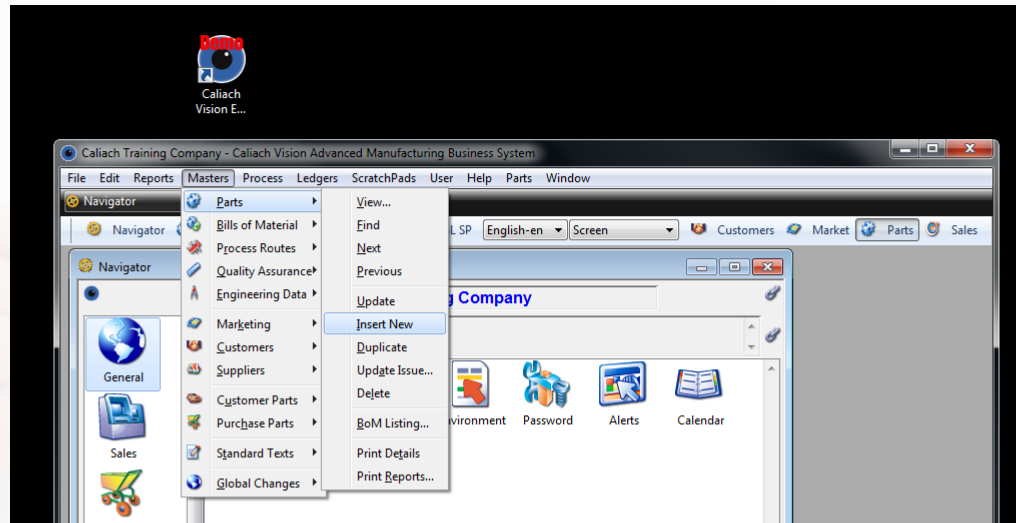


Check your customers by clicking "Cust SP"

The background image is a blurred, high-angle shot of a person's hands in a light-colored business suit. The hands are interacting with a tablet computer. On the tablet, there are several business-related graphics: a bar chart with blue bars, a pie chart, and some text. The overall scene suggests a professional or business environment. The text is overlaid on this background.

**Task 2: Create your own scenario**  
– make a new part, create a new  
order for a customer and  
dispatch it





# Enter a new part

Part Maintenance - ...

Characteristics Planning Storage Costs Selling Ledgers Engineering Texts Others

Part number AAP0001 Description My Cool Part Each

Index code 1 OTHE Others Show

Index code 2 NEW New: due to plan, cost & price Show

ABC class E Part type A Automatic (Buy or Make)

Stock UoM Each (A,B,M,N,O,P)

Last modified by

Current Quantities

Physical quantity	Alloc. to WOs	Due to SOs/Jobs	Due from W/POs	Projected stock	Kitted in WIP
0.000	0.000	0.000	0.000	0.000	0.000

Last change MRP Results

Period Usage

1	2	3	All
0.000	0.000	0.000	0.000

Next and Previous by Part Number

Revert to Saved Save as Shown Cancel OK

Navigator

Parts SP Cust SP Supp SP GL SP English-en Screen Customers Market Parts

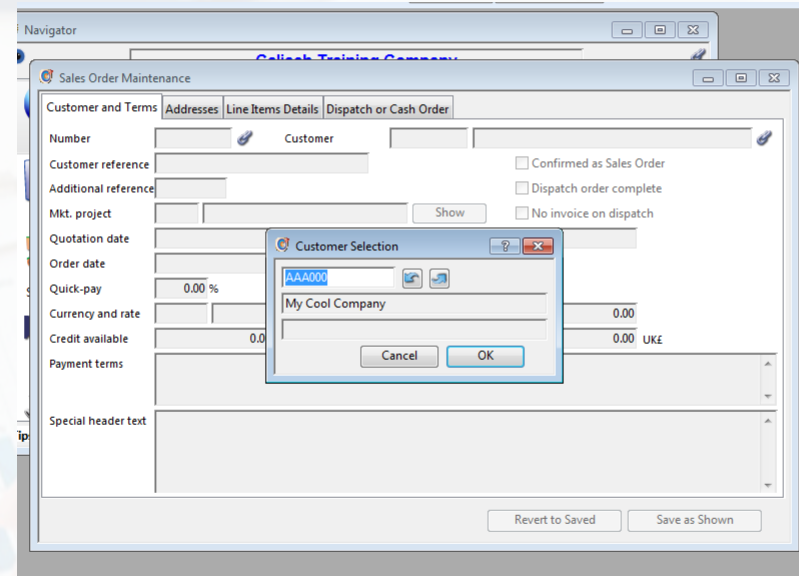
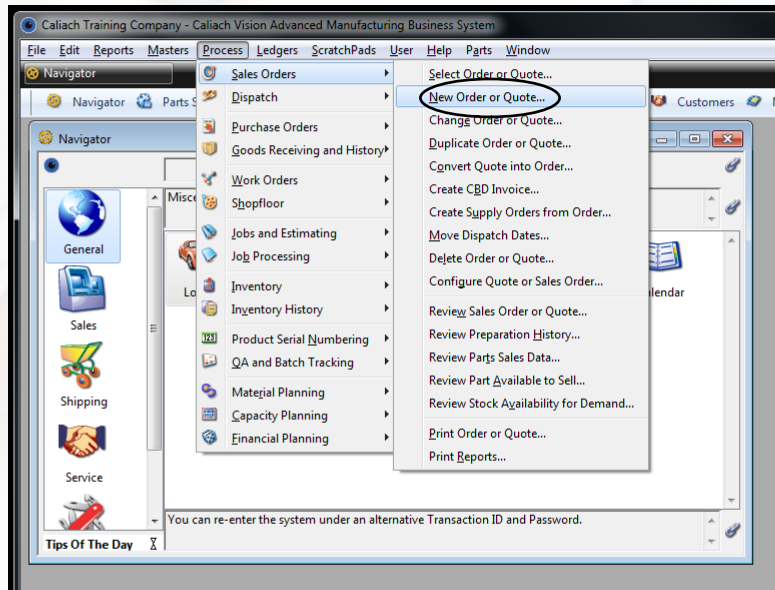
Caliach Training

Parts ScratchPad Options Print List Operations

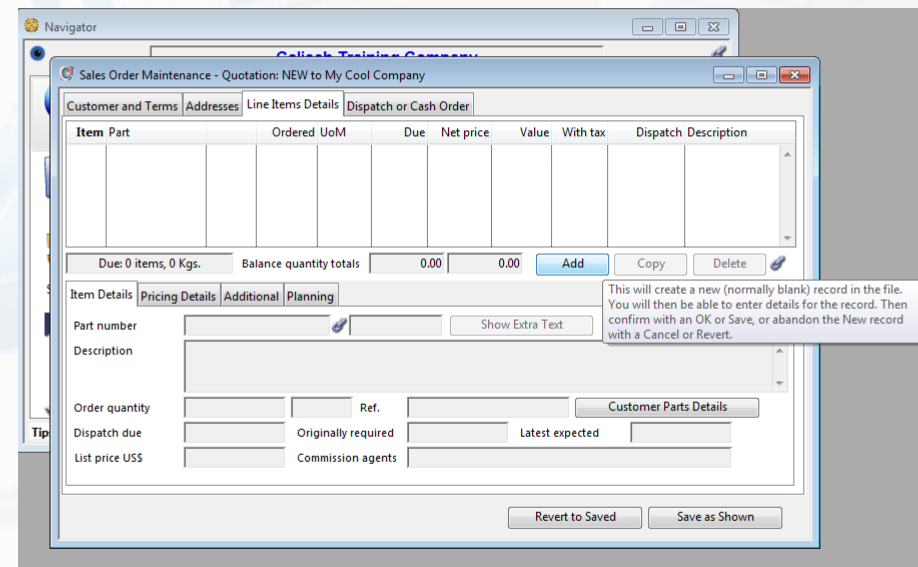
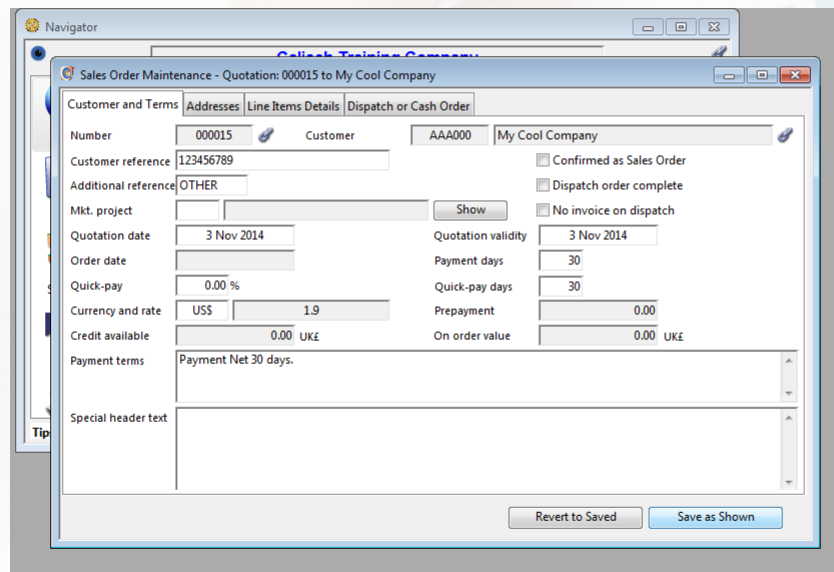
Part number	Description	Index 1
AHD00080	8Gb Removable Dis...	ASSY
AHD00220	22Gb Removable Di...	ASSY
AHD00500	50Gb Removable Di...	ASSY
AHD01000	100Gb Removable Di...	ASSY
AHD01001	100Gb Remov. Disk...	ASSY
AAP0001	My Cool Part	OTHE

Tips Of The Day

You can re-enter the system under an alternative



# Enter a new quote



Navigator

Sales Order Maintenance - Quotation: NEW to My Cool Company

Customer and Terms Addresses Line Items Details Dispatch or Cash Order

Item	Part	Ordered UoM	Due	Net price	Value	With tax	Dispatch	Description
1								

Due: 1 items, 0 Kgs.

Item Details Pricing Details Additional Planning

Part number AAP0001 Show Extra Text Configure New Part

Description

Order quantity 1.000 Each Ref. Customer Parts Details

Dispatch due 4 Nov 2014 Originally required 4 Nov 2014 Latest expected 4 Nov 2014

List price US\$ 0.00 Commission agents

Warning! Part "AAP0001" will have a resulting uncommitted stock of -1.000 (< Min. Qty. = 0.000, projected = -1.000!)

OK

# Complete the quote

Navigator

Sales Order Maintenance - Quotation: NEW to My Cool Company

Customer and Terms Addresses Line Items Details Dispatch or Cash Order

Item	Part	Ordered UoM	Due	Net price	Value	With tax	Dispatch	Description
1	AAP0001	2.000 Each	2.000	42.50	85.00	85.00	4 Nov 2014	My Cool Part

Due: 1 items, 0 Kgs. Balance quantity totals 85.00 85.00 Add Copy Delete

Item Details Pricing Details Additional Planning

Part number AAP0001 Show Extra Text Configure New Part

Description My Cool Part

Order quantity 2.000 Each Ref. Customer Parts Details

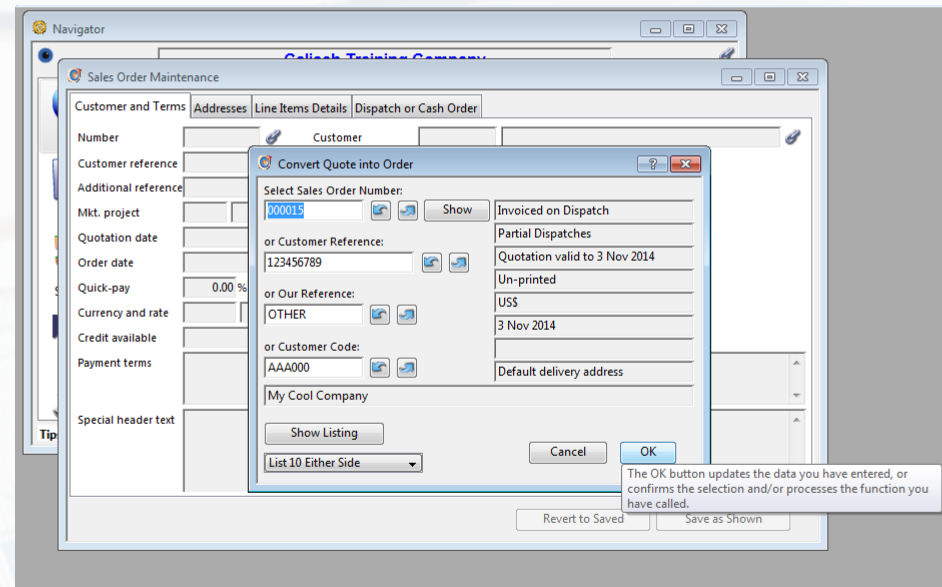
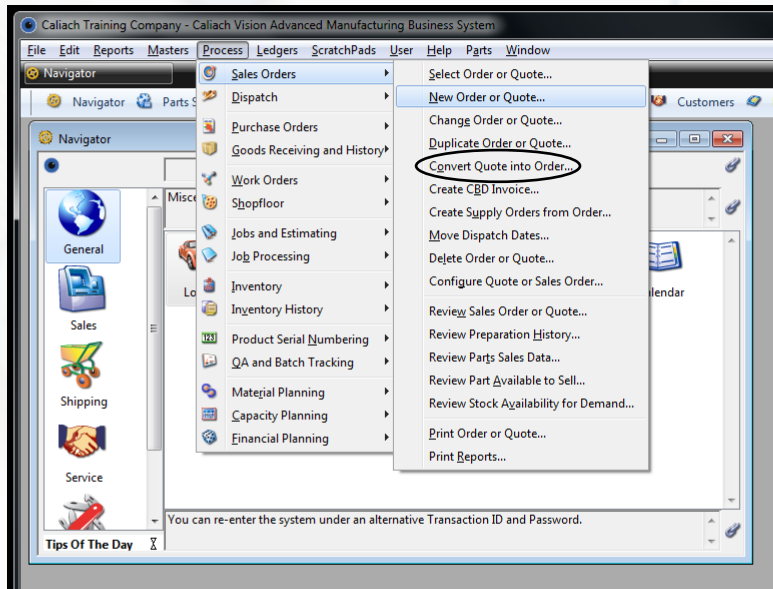
Dispatch due 4 Nov 2014 Originally required 4 Nov 2014 Latest expected 4 Nov 2014

List price US\$ 50.00 Commission agents

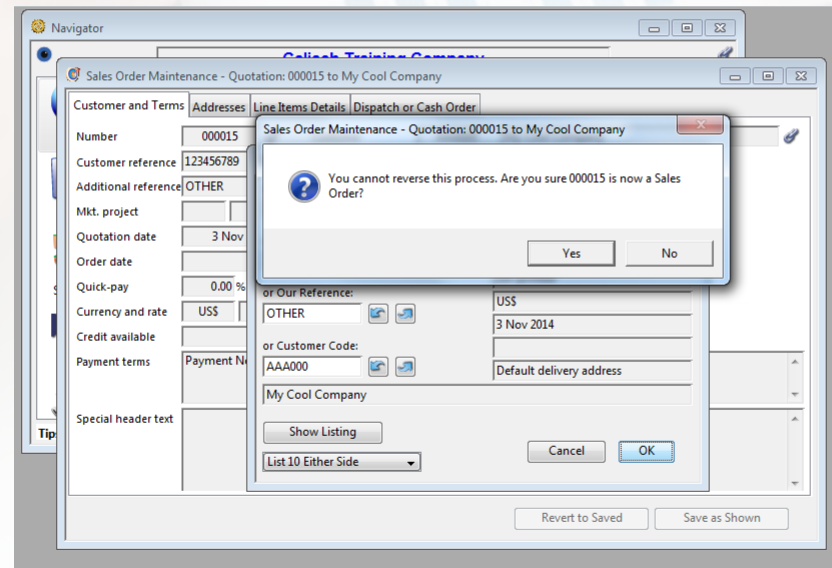
Revert to Saved Save as Shown

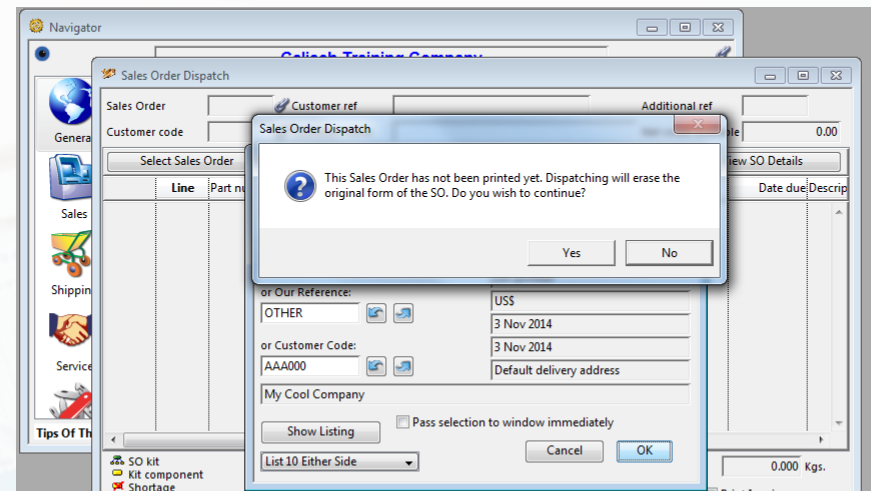
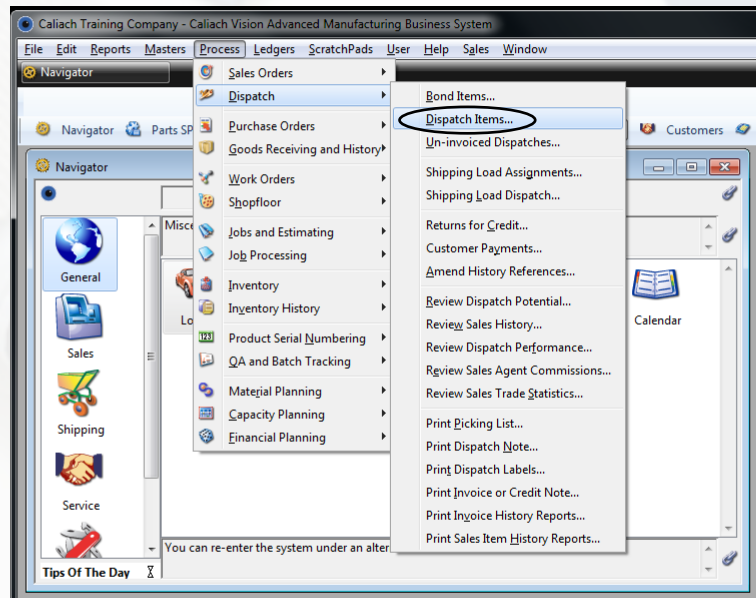
To save the changes you have made to the data file.



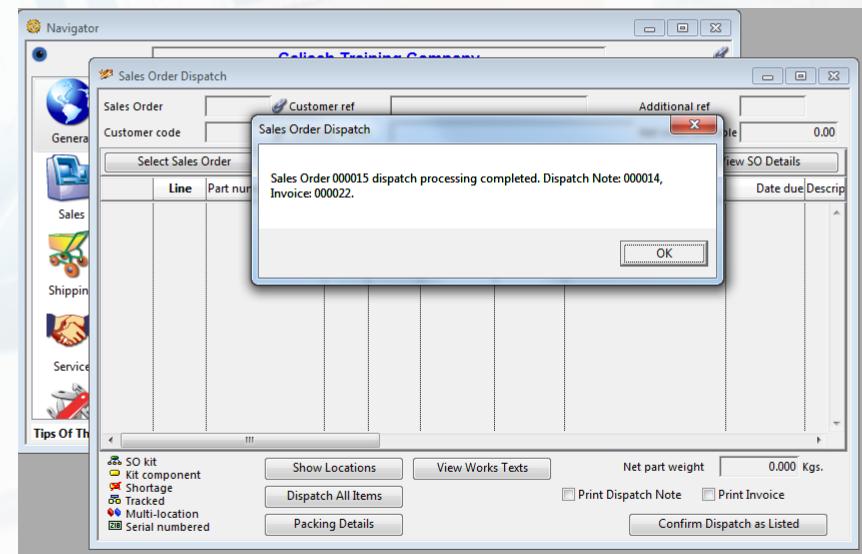
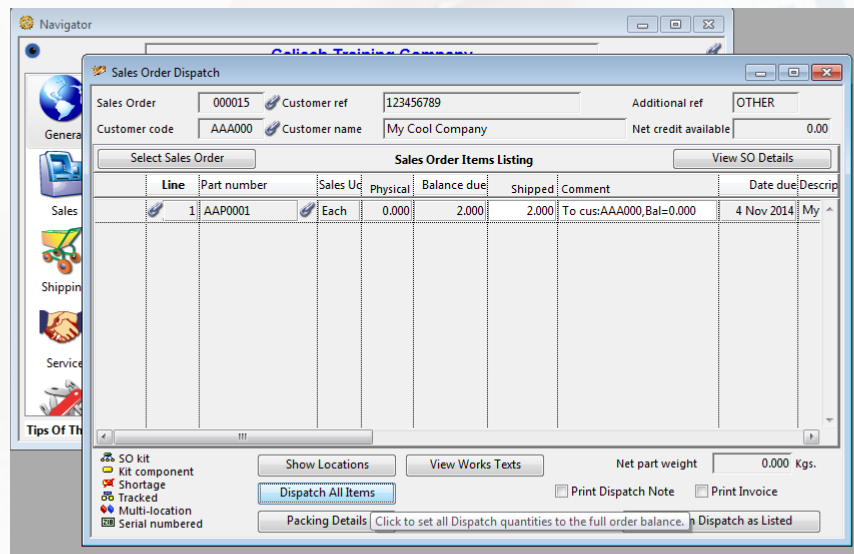


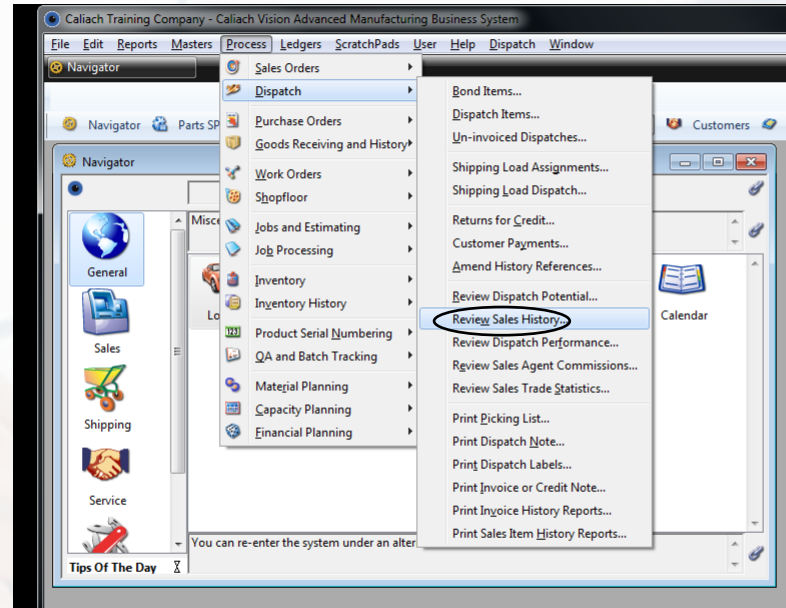
# Convert the quote into an order



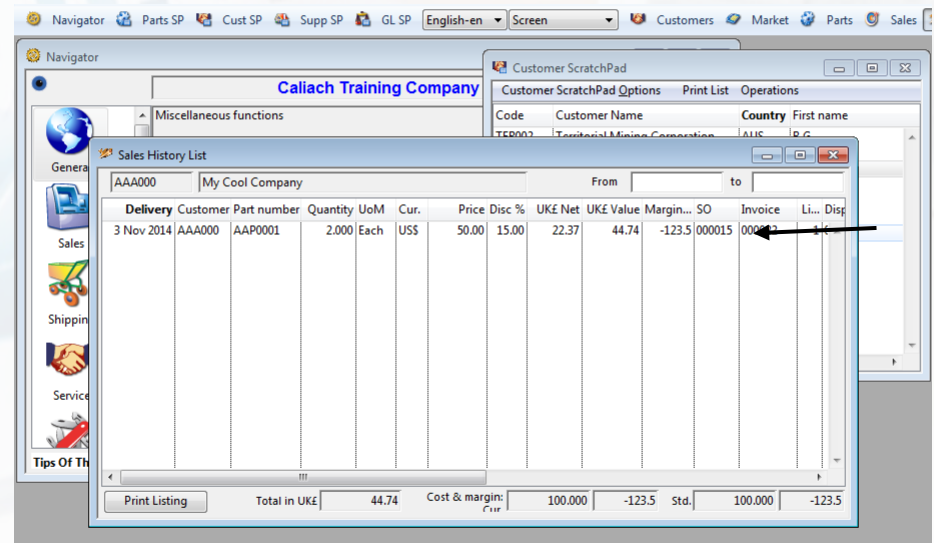
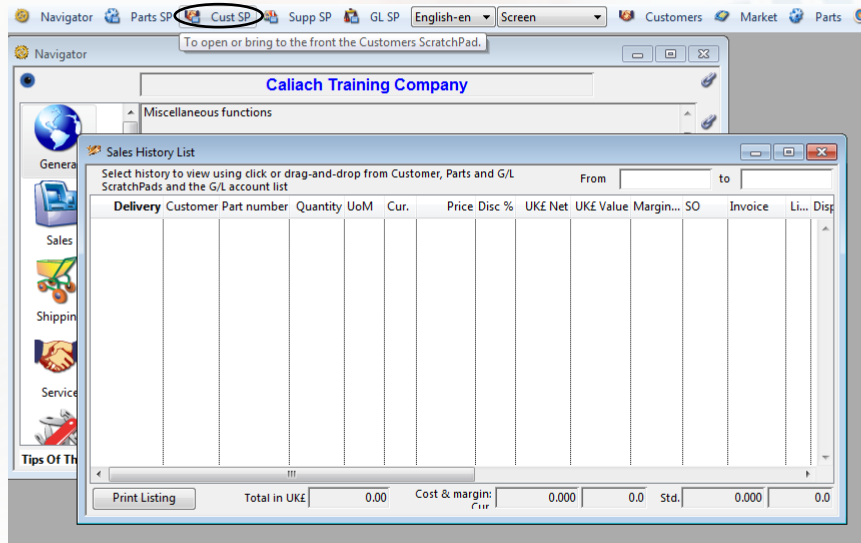


# Dispatch the order





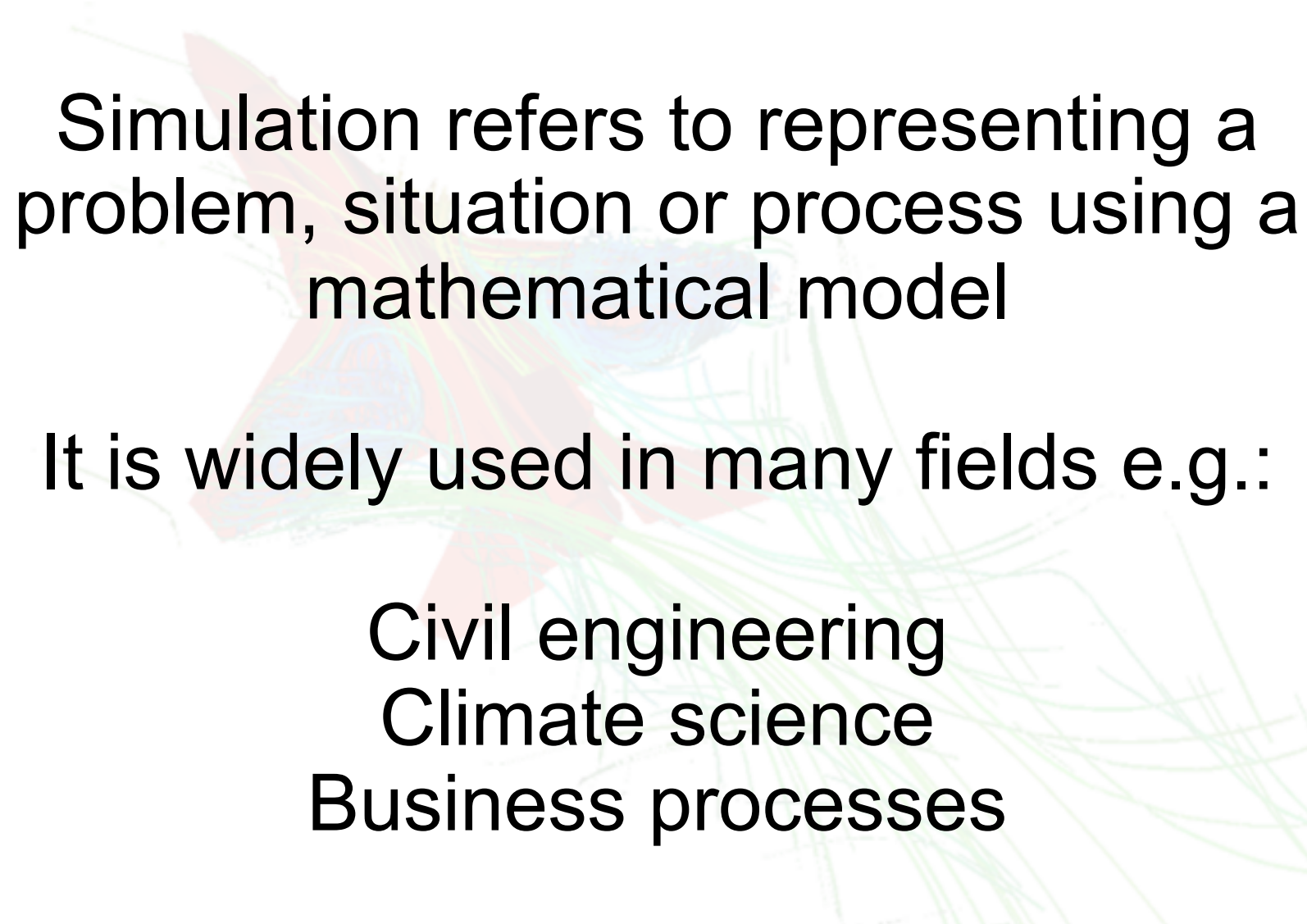
# Review Sales History





## 2) ExtendSim9

What is Simulation?

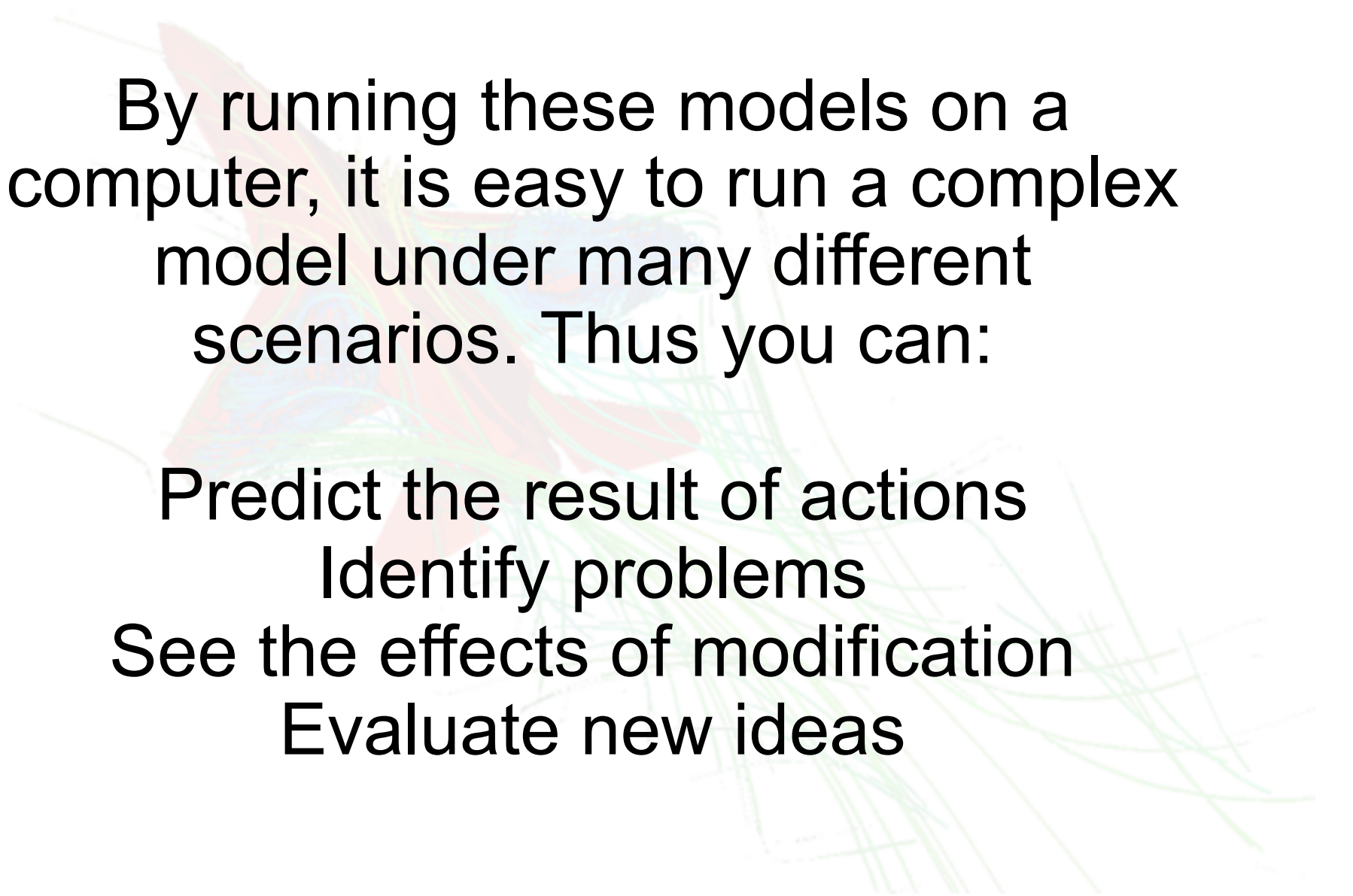


Simulation refers to representing a problem, situation or process using a mathematical model

It is widely used in many fields e.g.:

Civil engineering  
Climate science  
Business processes





By running these models on a computer, it is easy to run a complex model under many different scenarios. Thus you can:

Predict the result of actions

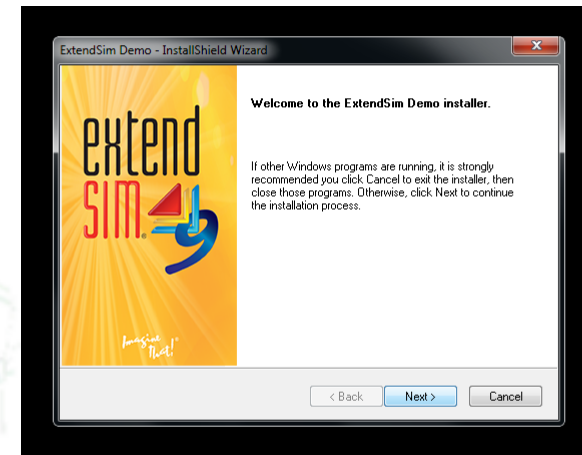
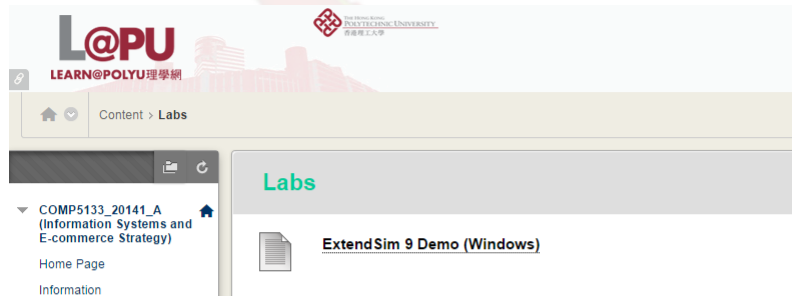
Identify problems

See the effects of modification

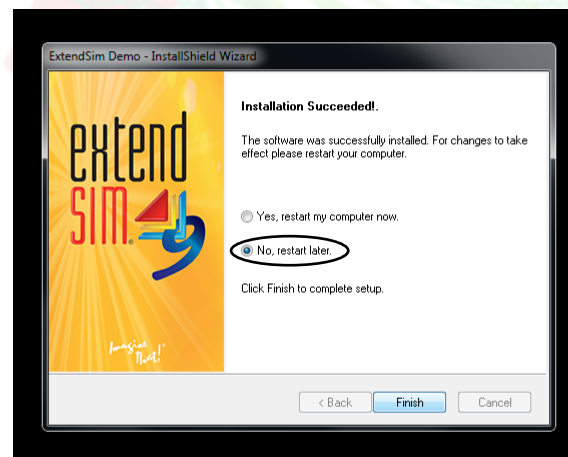
Evaluate new ideas

An abstract background featuring a large, semi-transparent red star shape. Overlaid on and around the star are numerous thin, curved lines in shades of green and blue, creating a sense of motion or a complex field. The overall composition is centered on a white background.

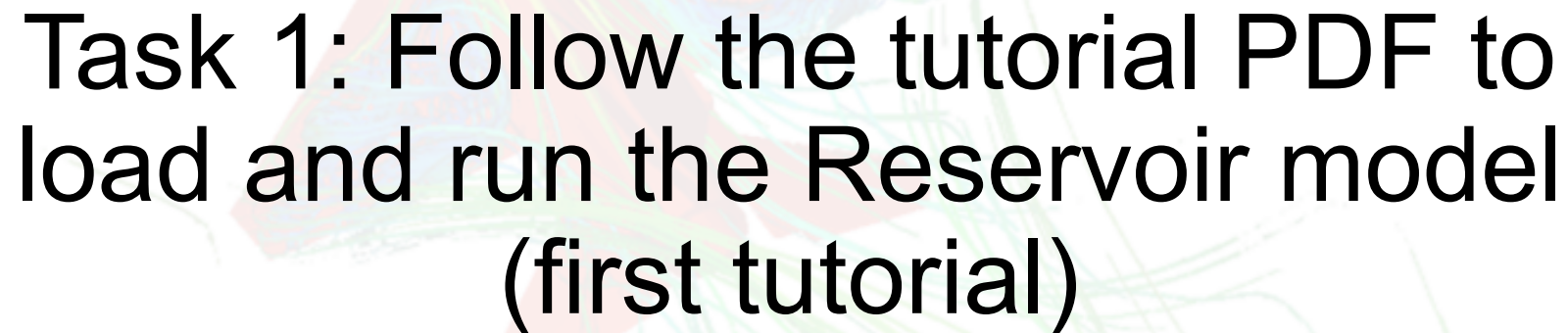
# Using ExtendSim



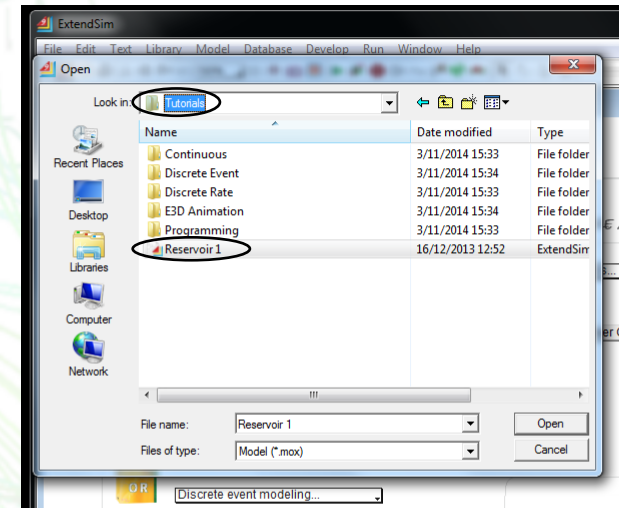
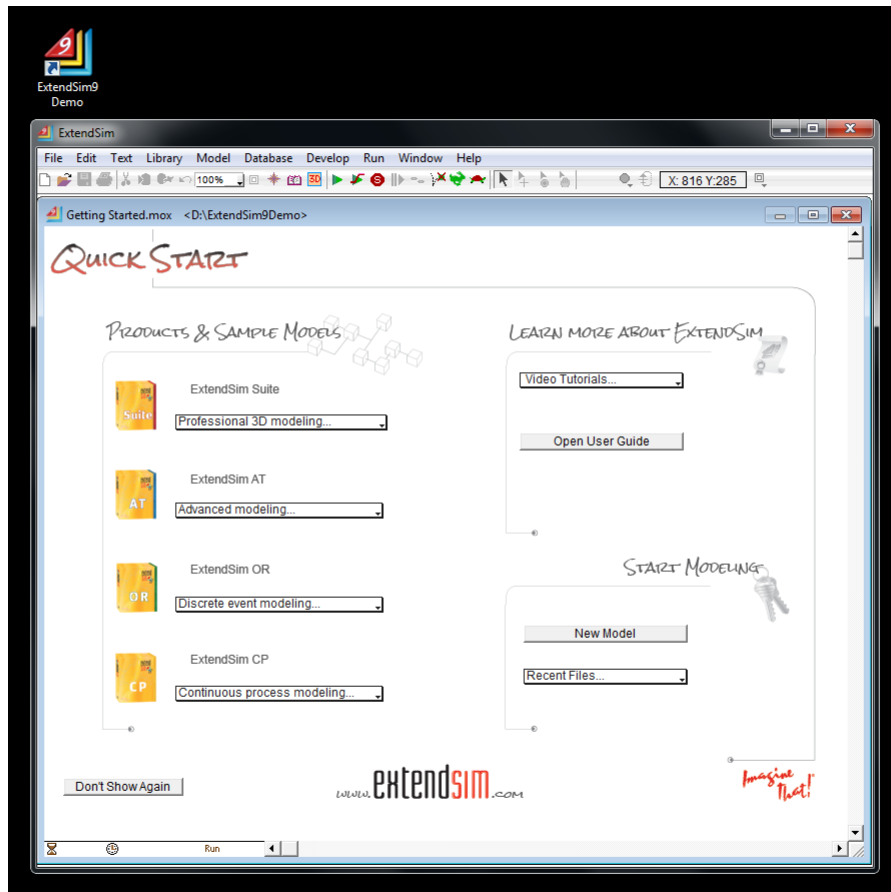
# Download and install







Task 1: Follow the tutorial PDF to  
load and run the Reservoir model  
(first tutorial)



# Load the Reservoir model

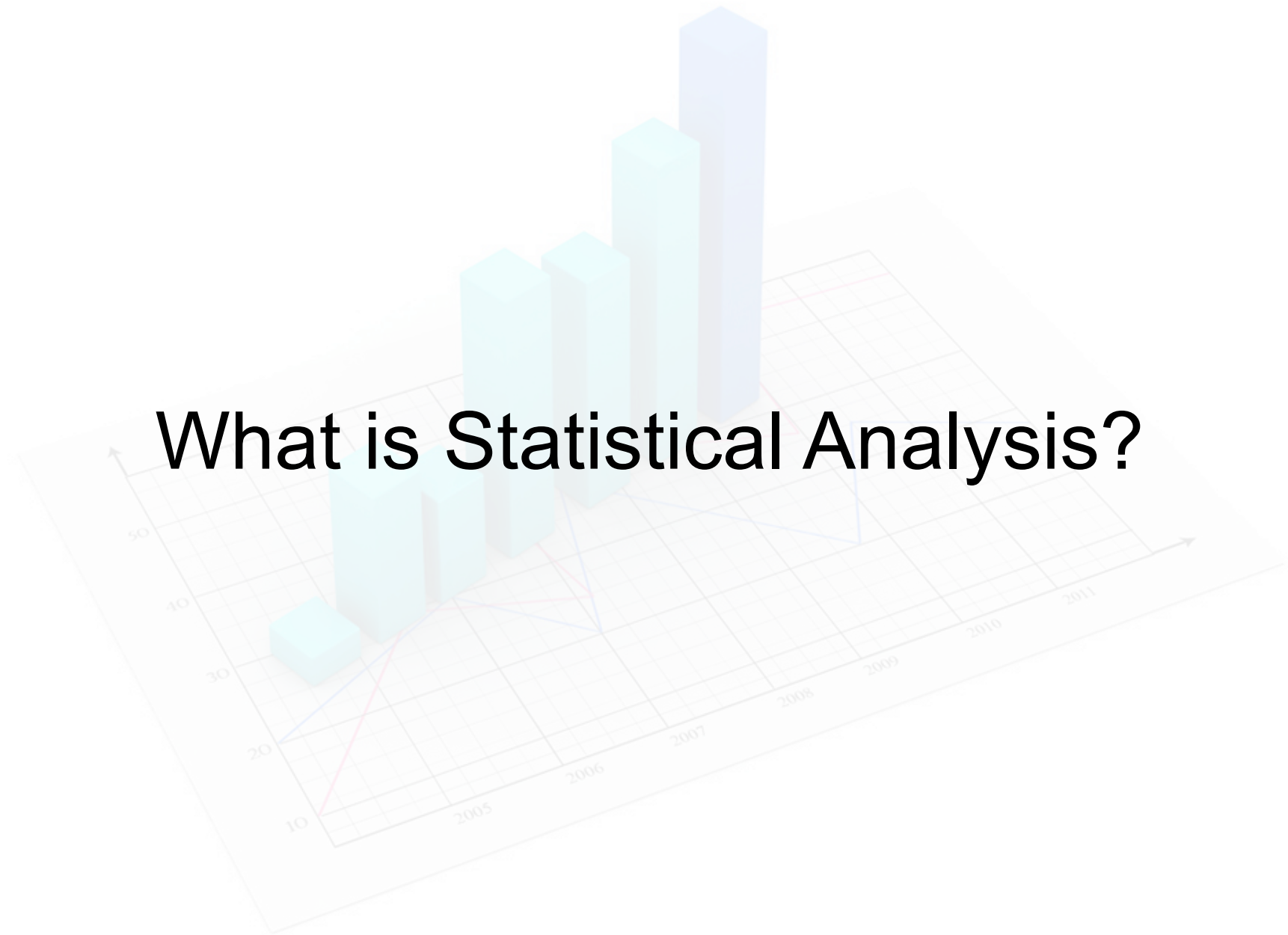
## Task 2: Create your own model with different output

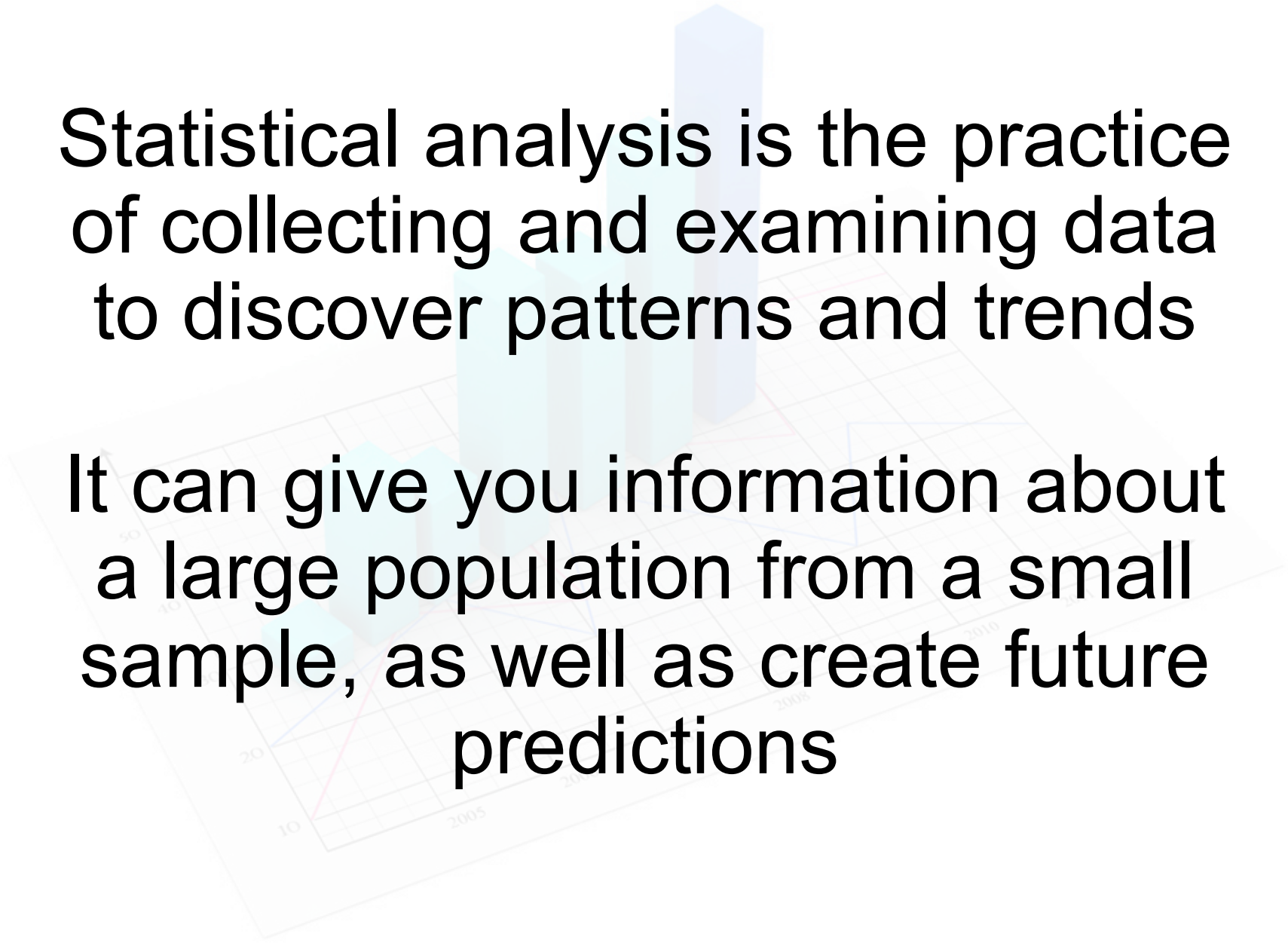
*Note: You can use the Reservoir  
model and change some values/  
blocks/links to get different output*

# Creating a model in ExtendSim



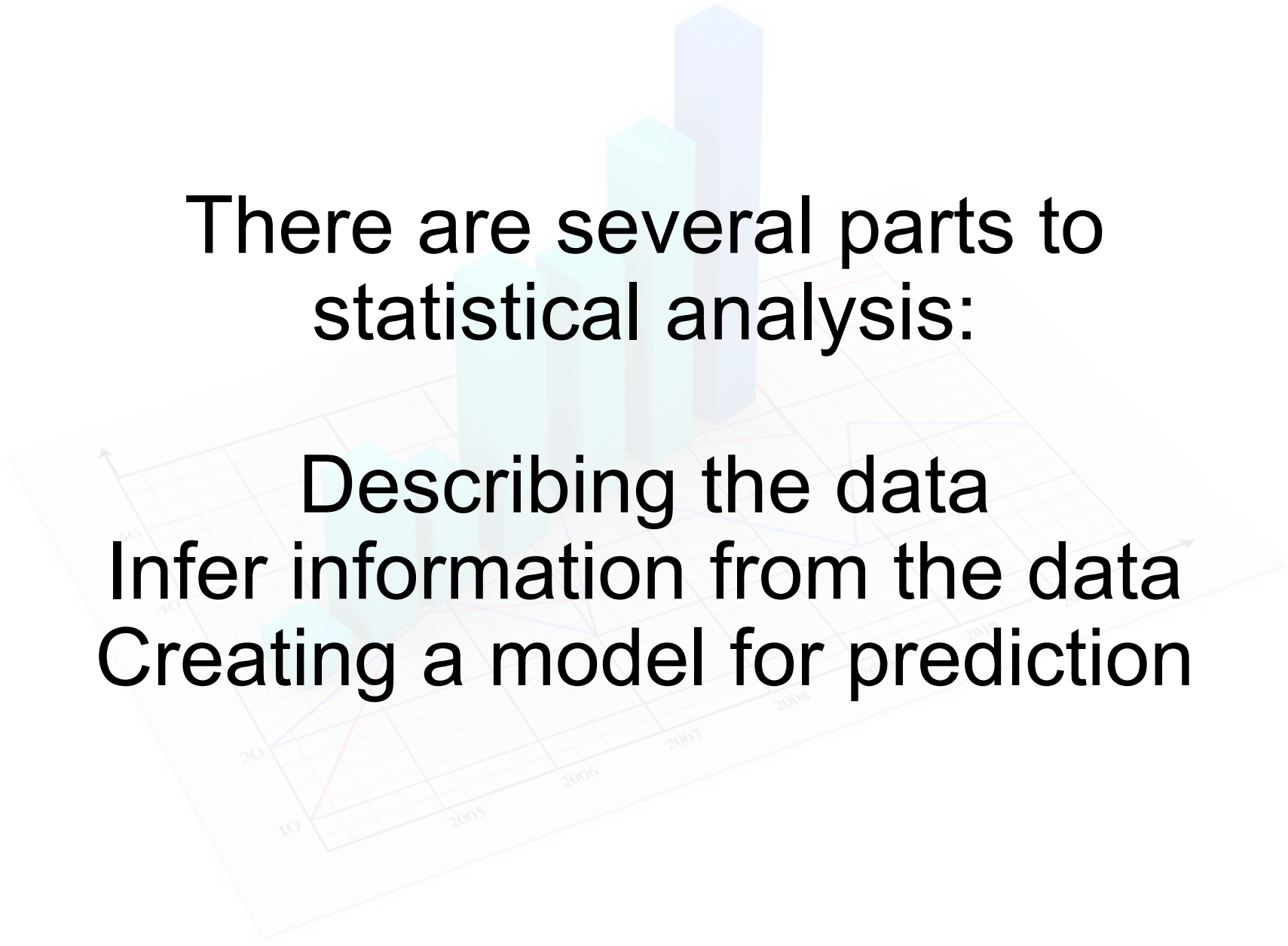
# What is Statistical Analysis?





Statistical analysis is the practice of collecting and examining data to discover patterns and trends

It can give you information about a large population from a small sample, as well as create future predictions



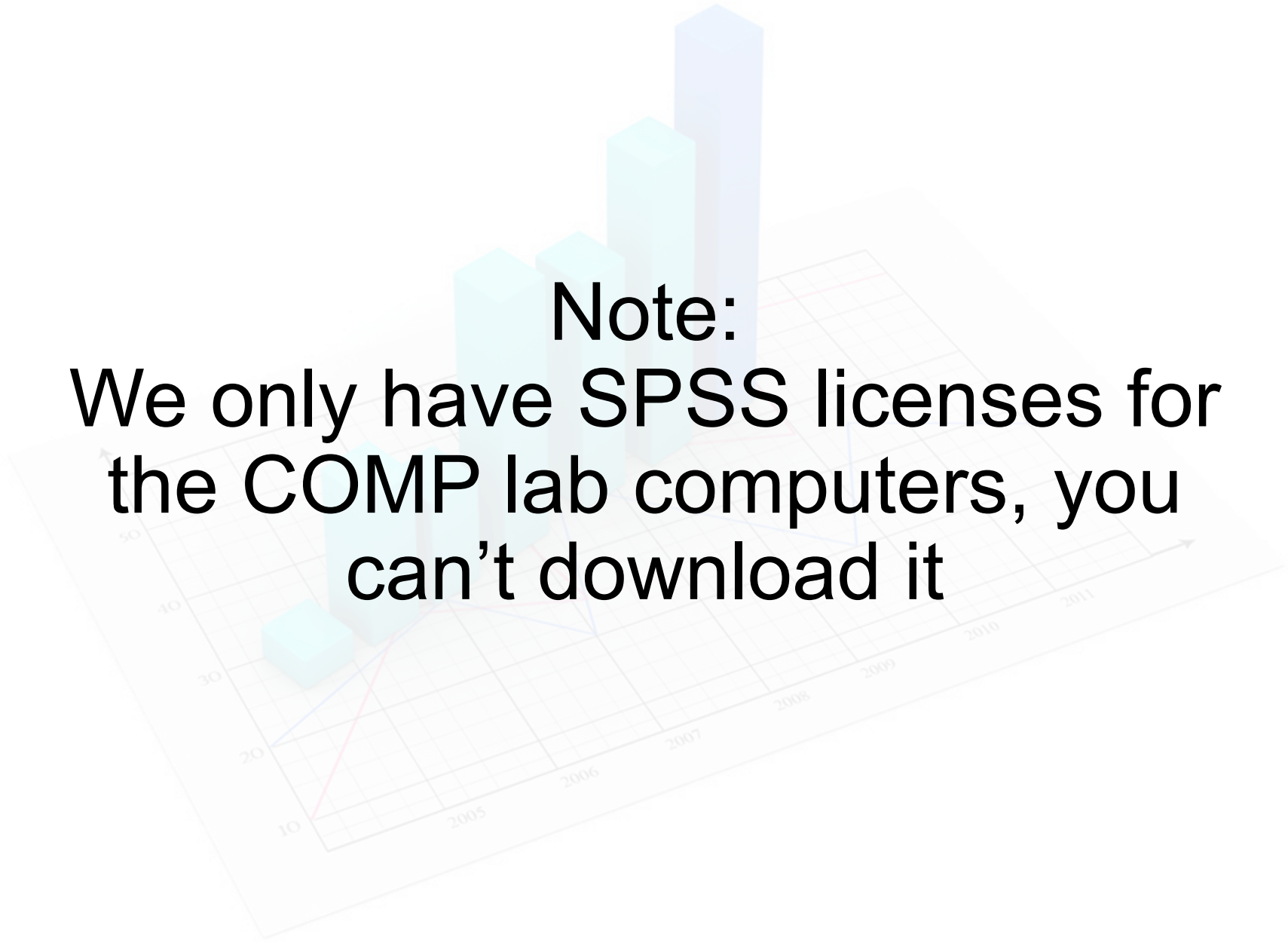
There are several parts to  
statistical analysis:

Describing the data  
Infer information from the data  
Creating a model for prediction

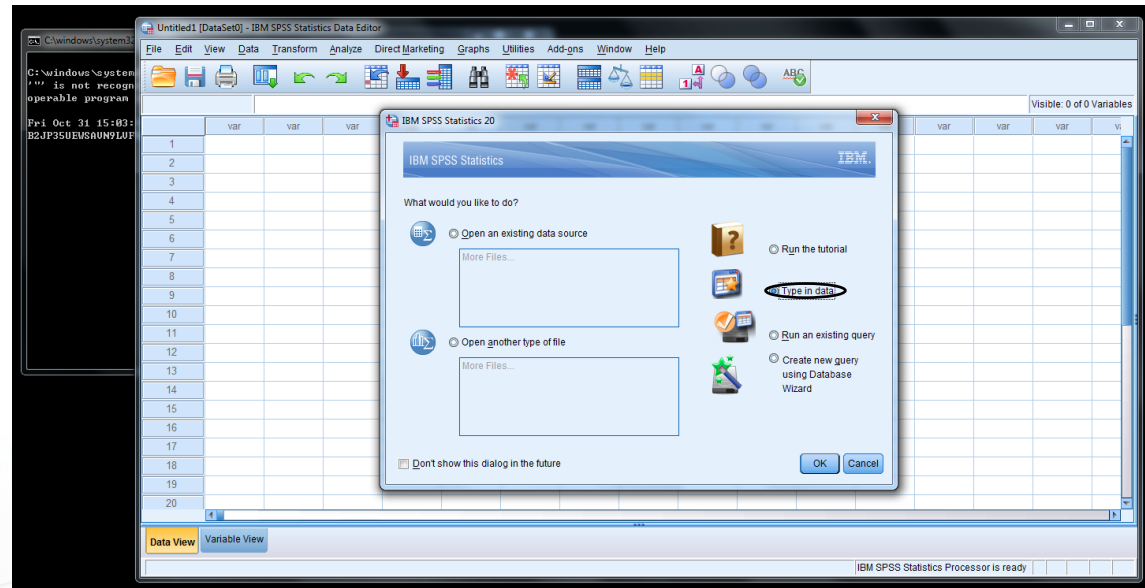
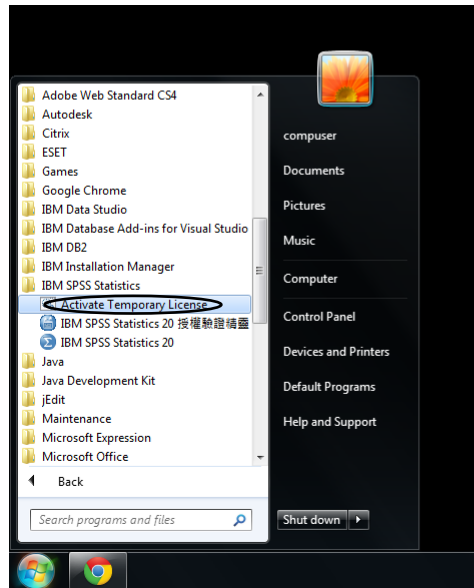
# SPSS: Statistical Package for the Social Sciences

It is a commonly used statistical analysis program (not just for social sciences)

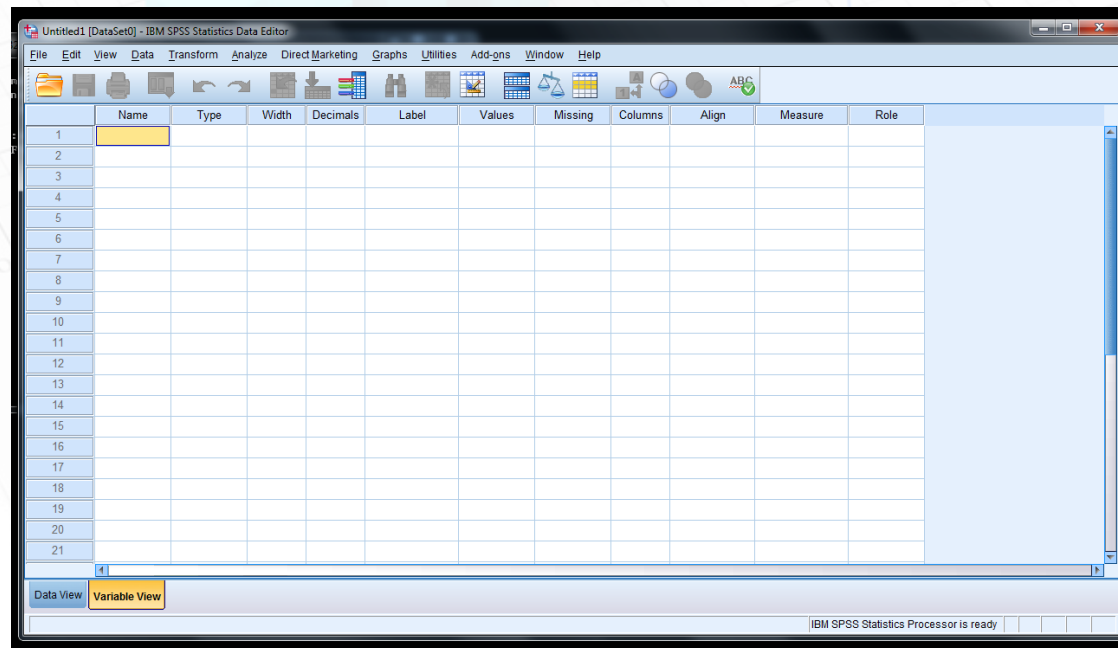




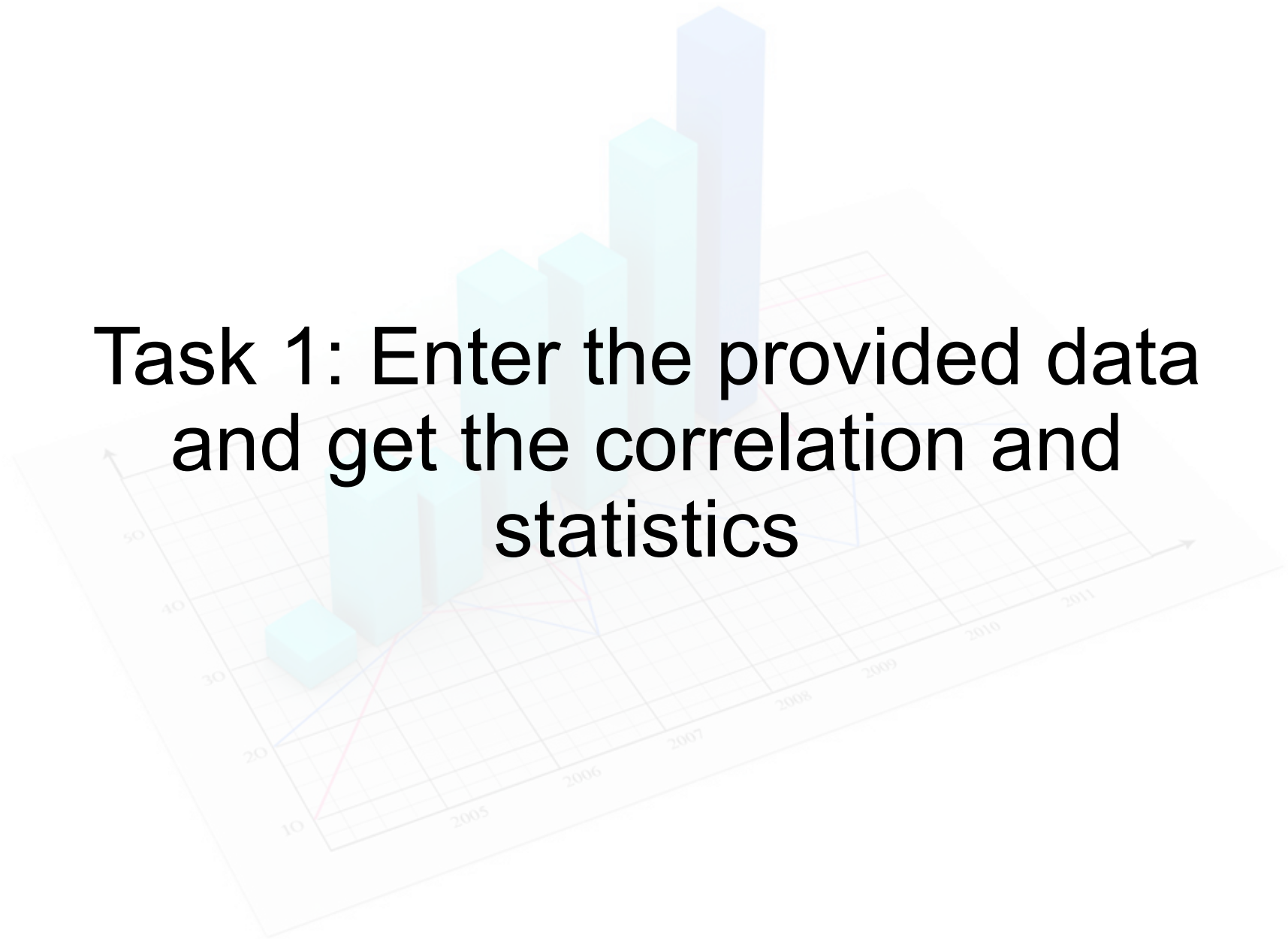
**Note:**  
We only have SPSS licenses for  
the COMP lab computers, you  
can't download it



# Load SPSS



**Task 1: Enter the provided data  
and get the correlation and  
statistics**



File Edit View Data Transform Analyze Direct Marketing Graphs Utilities Add-ons Window Help											
	Name	Type	Width	Decimals	Label	Values	Missing	Columns	Align	Measure	Role
1	StudentId	Numeric	8	0	Student ID	None	None	8	Right	Scale	Input
2	Income	Numeric	8	0		None	None	8	Right	Scale	Input
3	Noise	Numeric	8	0		None	None	8	Right	Scale	Input
4	Furniture	Numeric	8	0		None	None	8	Right	Scale	Input
5	StudyArea	Numeric	8	0	Study Area	None	None	8	Right	Scale	Input
6	Safety	Numeric	8	0		None	None	8	Right	Scale	Input
7	Privacy	Numeric	8	0		None	None	8	Right	Scale	Input
8											
9											
10											
11											
12											
13											
14											
15											
16											
17											
18											
19											
20											
21											

Data View Variable View

IBM SPSS Statistics Processor is ready

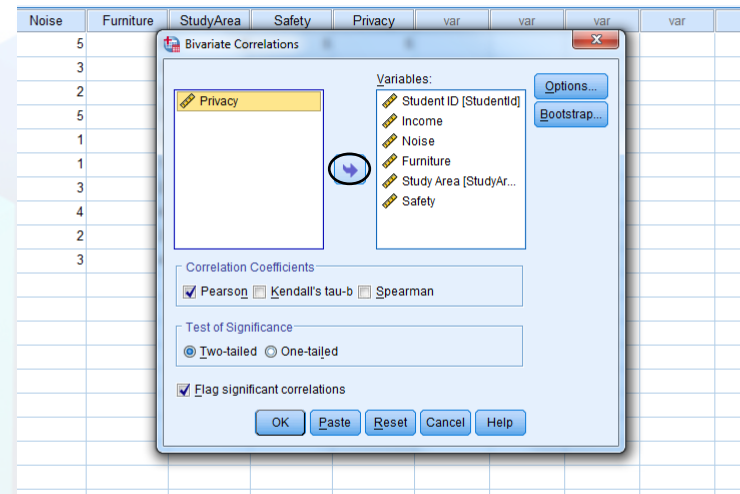
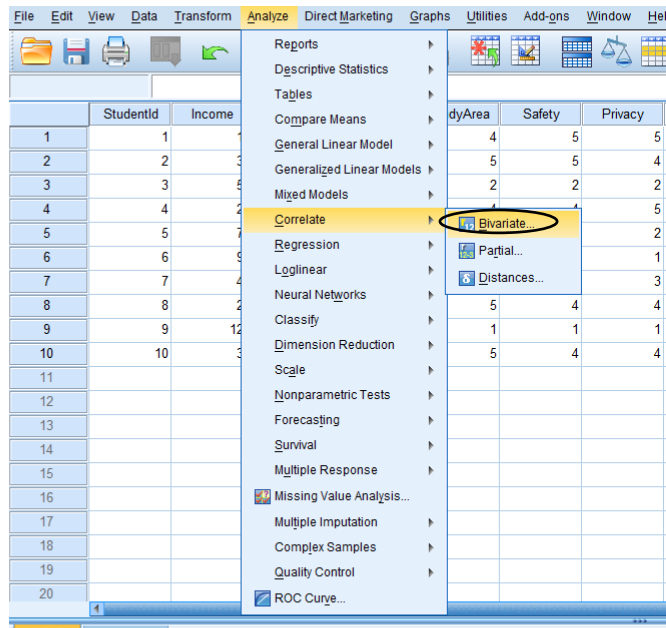
Input the above values into Variable View

File Edit View Data Transform Analyze Direct Marketing Graphs Utilities Add-ons Window Help															
															Visible: 7 of 7 Variables
	StudentId	Income	Noise	Furniture	StudyArea	Safety	Privacy	var	var	var	var	var	var	var	var
1	1	19	5	5	4	5	5								
2	2	39	3	3	5	5	4								
3	3	55	2	1	2	2	2								
4	4	25	5	3	4	4	5								
5	5	75	1	2	2	1	2								
6	6	95	1	1	1	1	1								
7	7	47	3	2	4	3	3								
8	8	28	4	4	5	4	4								
9	9	120	2	2	1	1	1								
10	10	35	3	4	5	4	4								
11															
12															
13															
14															
15															
16															
17															
18															
19															
20															

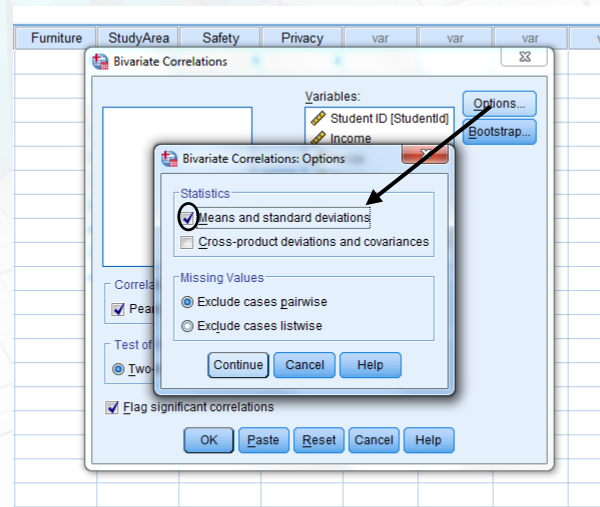
Data View
Variable View

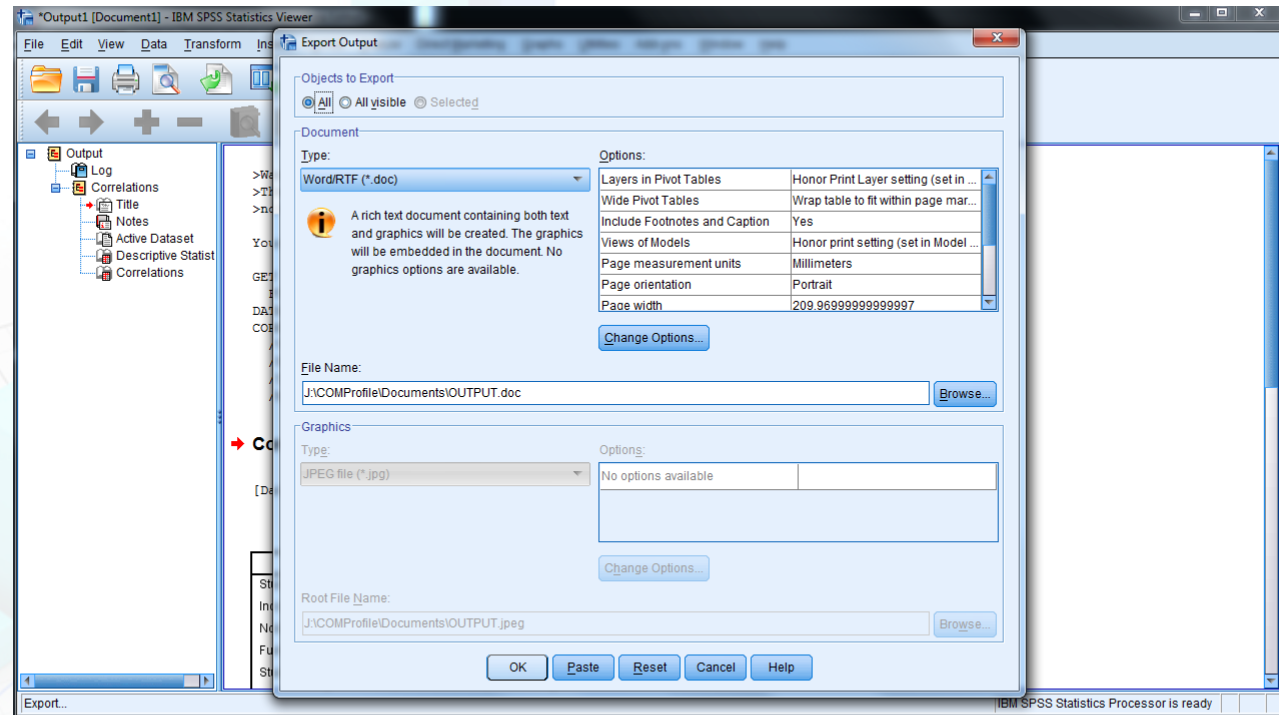
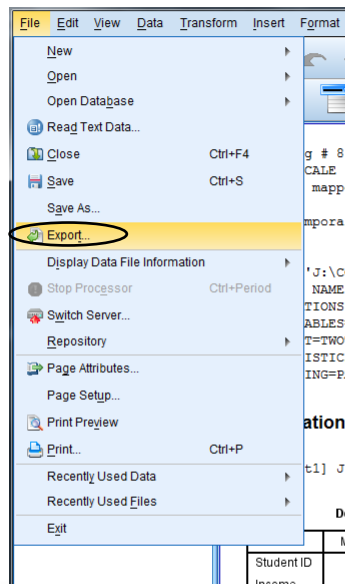
IBM SPSS Statistics Processor is ready

Input the above values into Data View



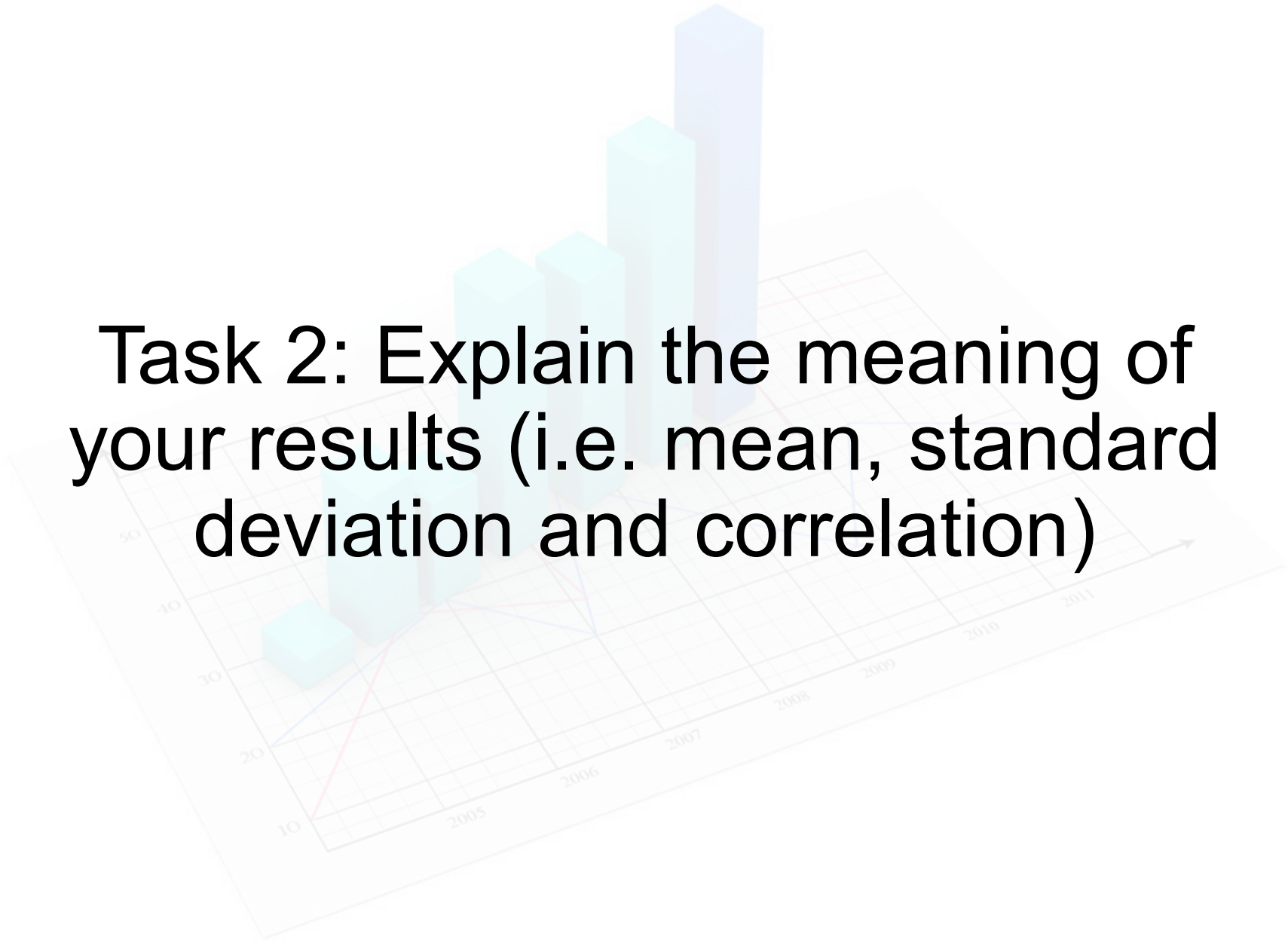
# Calculate statistics





# Export results





Task 2: Explain the meaning of your results (i.e. mean, standard deviation and correlation)

Finally, on the group report  
please write down **which  
exercise** your group will  
complete

1. ERP with CalVision
2. Simulation with ExtendSim
3. Statistics with SPSS

thanks !